


PROMINENCE
ESTATES



RESIDENTIAL
PROPERTY EXPERTS

COVENTRY, WARWICKSHIRE
& LEAMINGTON SPA

LANDSDOWNE STREET,
COVENTRY, CV2 4FN

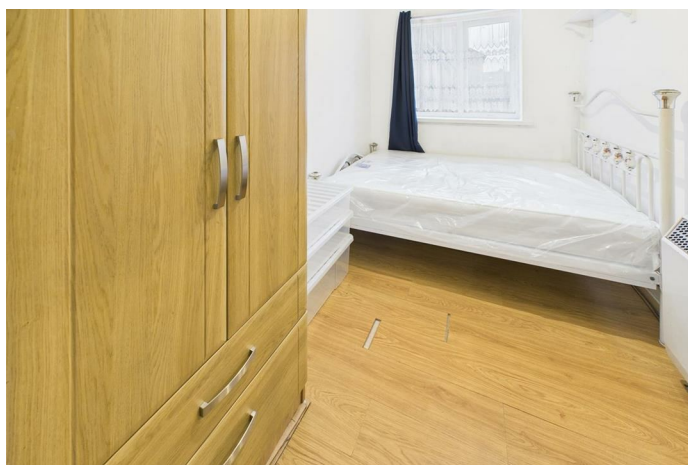
£725 PER CALENDAR

LANSDOWNE STREET

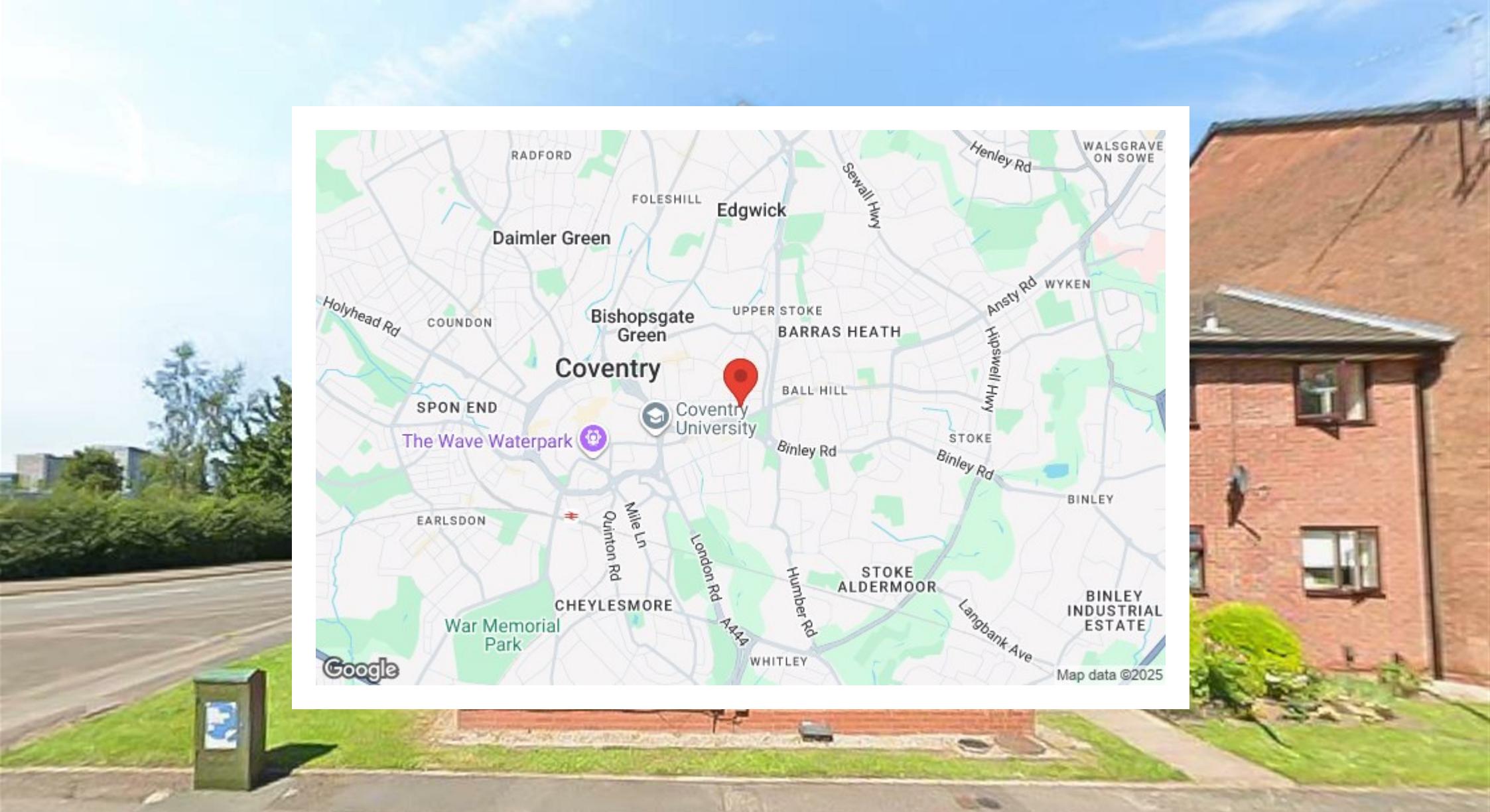


PROMINENCE
ESTATES

A well-presented one-bedroom apartment located on Lansdowne Street, offering comfortable and practical living in a convenient Coventry location. The property comes fully furnished and includes a cosy living area, a functional fitted kitchen, a good-sized double bedroom, and a clean, well-maintained bathroom. With plenty of natural light and all essential furnishings provided, it's ready for immediate occupancy. Close to local amenities, public transport, and Coventry city centre, this apartment is ideal for students or professionals looking for a straightforward, move-in-ready home.







Prominence Estates
5 Queen Isabels Avenue,
Cheylesmore,
Coventry,
CV3 5GE

02476 309 826
lettings@prominenceestates.com
www.prominenceestates.com


PROMINENCE
— ESTATES —